



RAFIQ & SONS

1st Floor , 358 - F/2 Johar Town -
Lahore - PAKISTAN

Tell: +92 42 35240675 ,

Cell / Whats App: +92 331 4495218

E/m: rafiq_son@yahoo.com

Skype: abdulrehman.pu

About Us:

We Deals in Various other Kind of **Meteorology**, Hydrology, **Climatology**, Geology, **Environmental**, Irrigation, **Water Measuring and Testing**, Agriculture **Research Equipment / Instruments**.

Attach is Some information for your consideration. Please Feel Free to contact us.



I - HYDROLOGY & DISCHARGE MEASURING EQUIPMENTS

Water Flow & Discharge Measurements in canals, river and irrigation Drainage Channels:

- **By Current Meters/Wadding Rod**

i- Cup type



ii- Propeller Type



We go in fields and take measurements at different points



Flow Computer and Discharge calculator



FLOW TRACKER Acoustic Doppler Velocity-meter (ADV)



ELECTROMEGNETIC Flow Meter

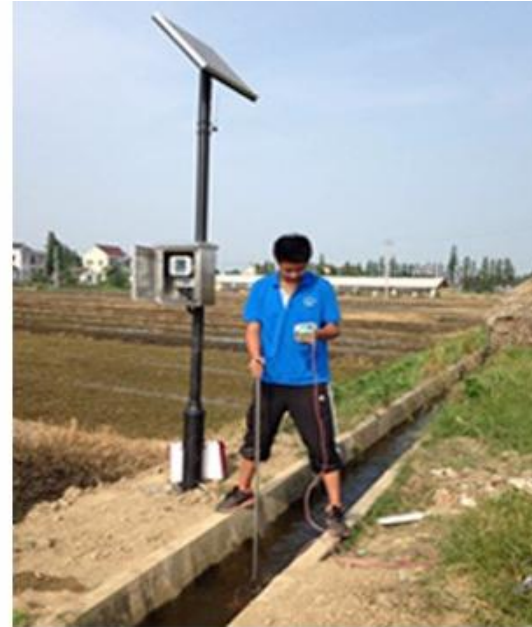
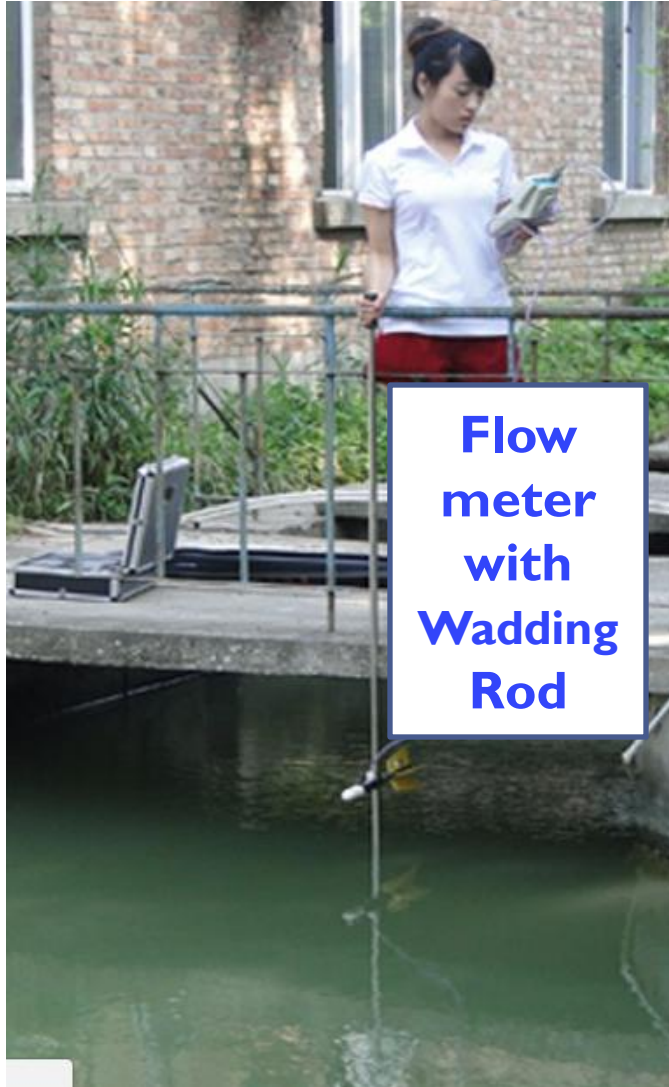


It can Measure:

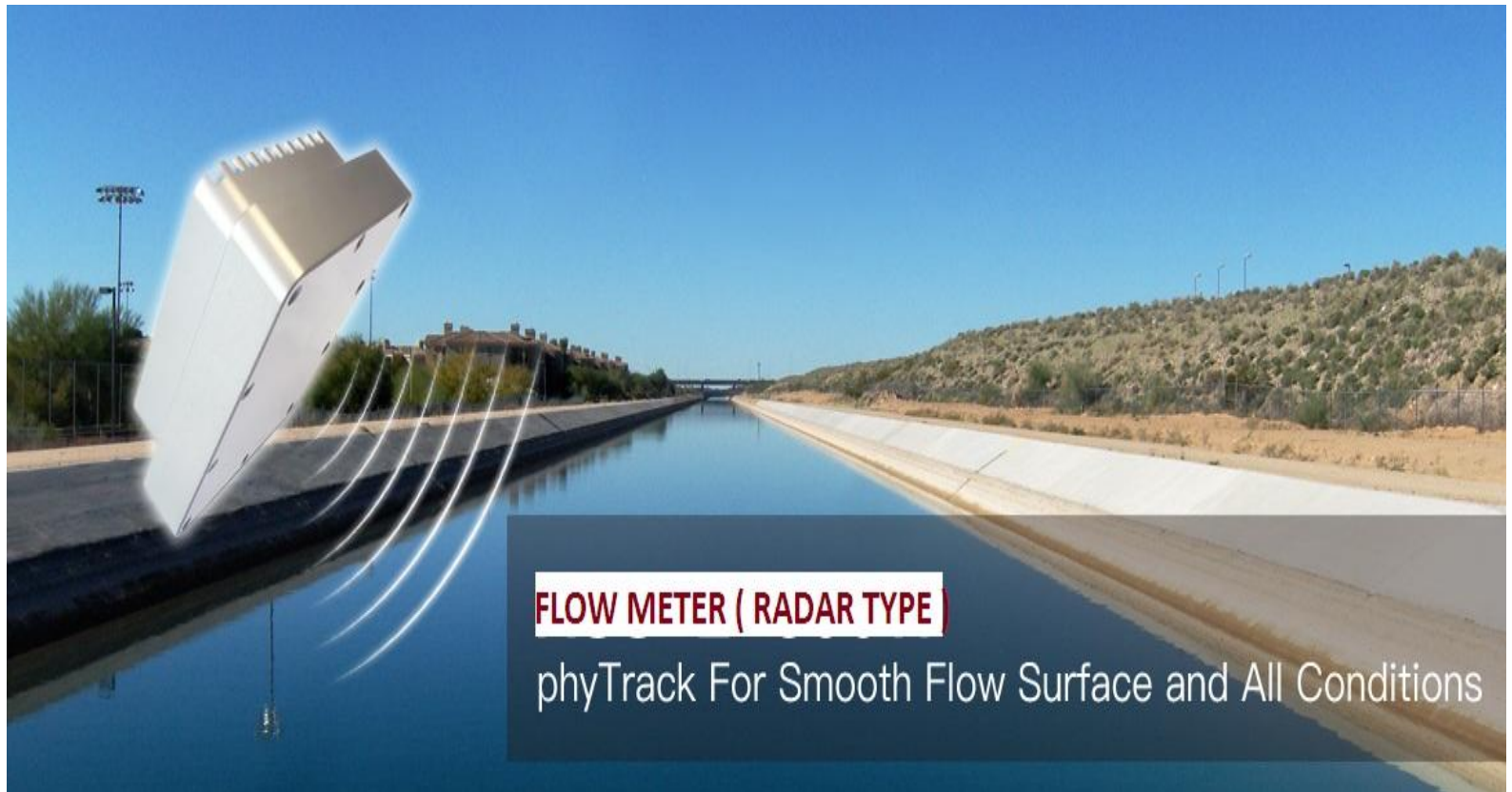
- ❖ Flow
- ❖ Velocity
- ❖ Level

Easy to Carry and Use

No movable parts, no maintenance,



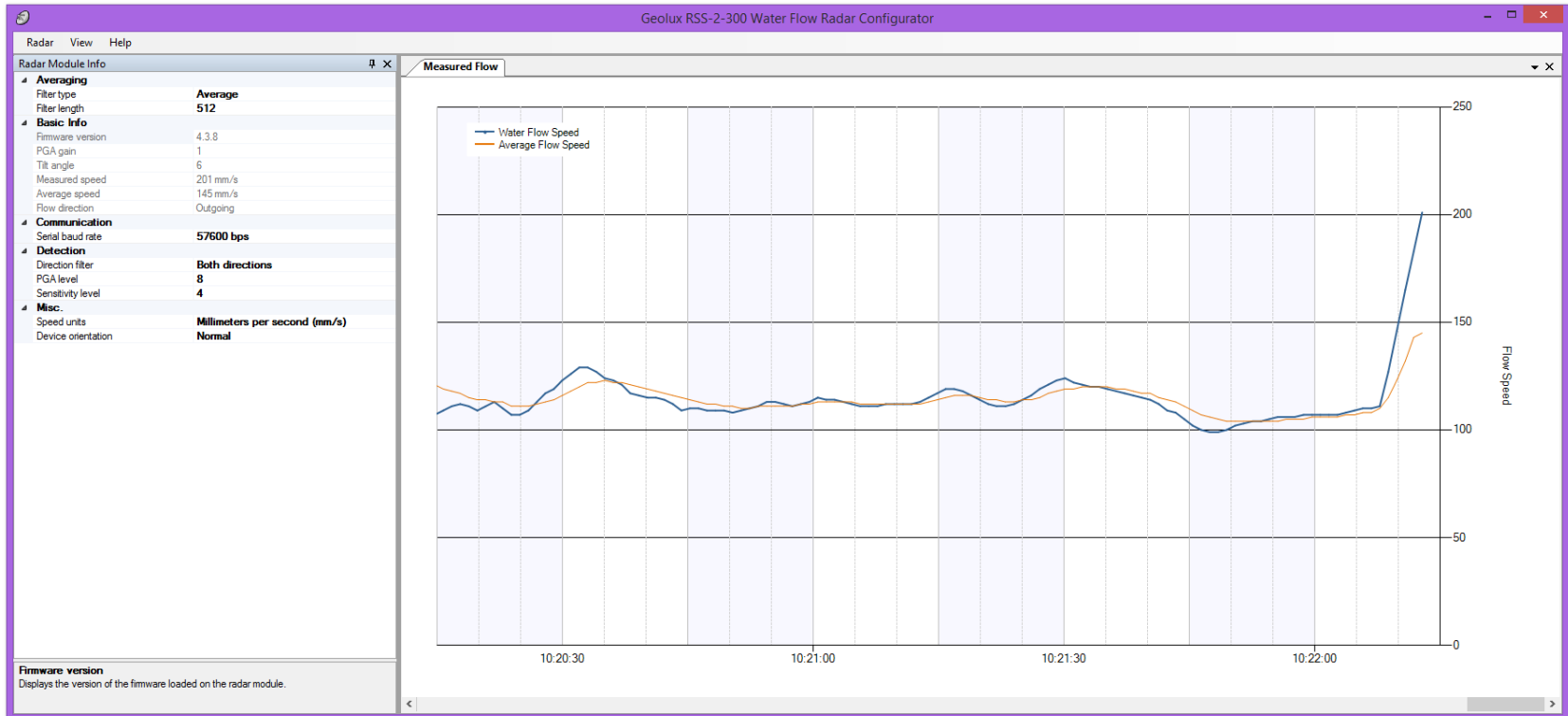
New Radar Type Flow Sensor for continuous Flow Monitoring



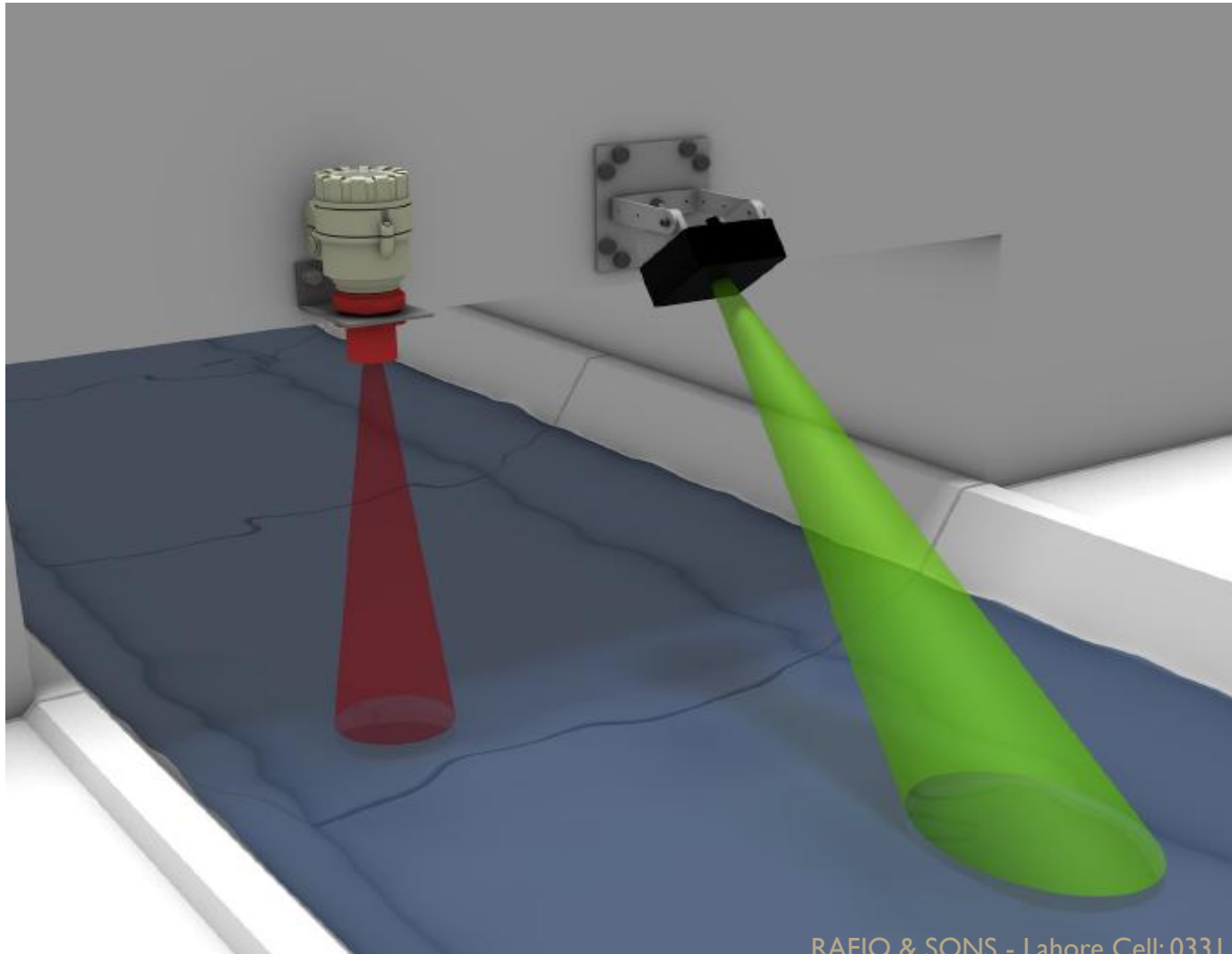
Quick and **simple** sensor installation above the water surface, and requires minimum maintenance.



Water Flow Speed



Water Level & Flow Sensor



An Ultrasonic or Radar Based Flow & Velocity Sensor

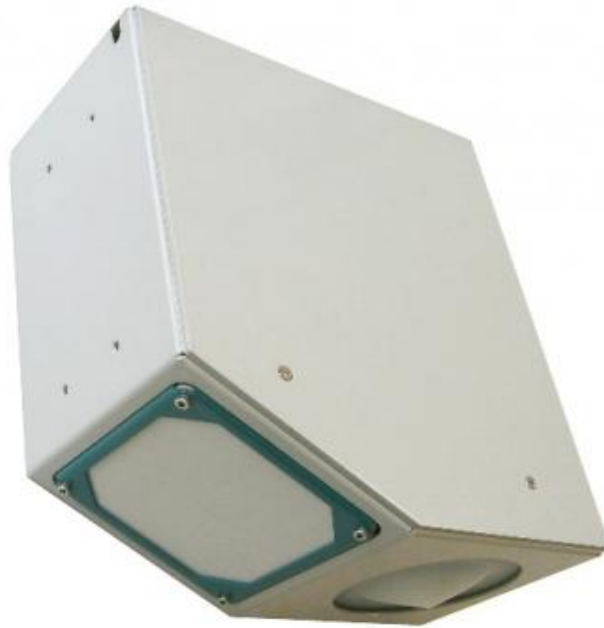
- **The System is to design for continuous operation and suitable for measurements of flow not only in rivers and Open Channels, But Also in Municipal waste water and storm water sewer.**
- **No influence from Sedimentation**
- **Easy installation**
- **Bi-Direction Velocity Measurements**

Combine Sensor (Level + Flow)



Water Flow & Discharge Measurements in canals, river and irrigation Drainage Channels:

- Non Contact Sensor



Sensor Installed at Bridge



Open Channel **ULTRASONIC** Flow Meter With Flow Calculator

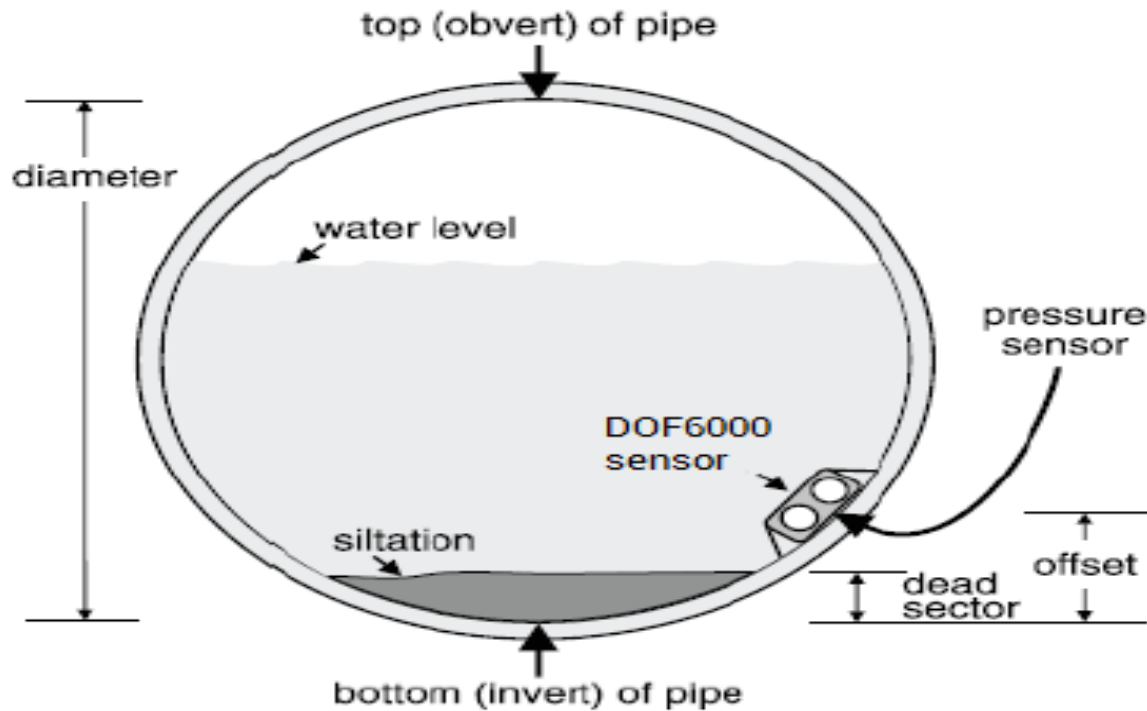


Ultrasonic open channel flow meter

RAFIQ & SONS - Lahore Cell: 0331 -
4495218 E/m: rafiq_son@yahoo.com

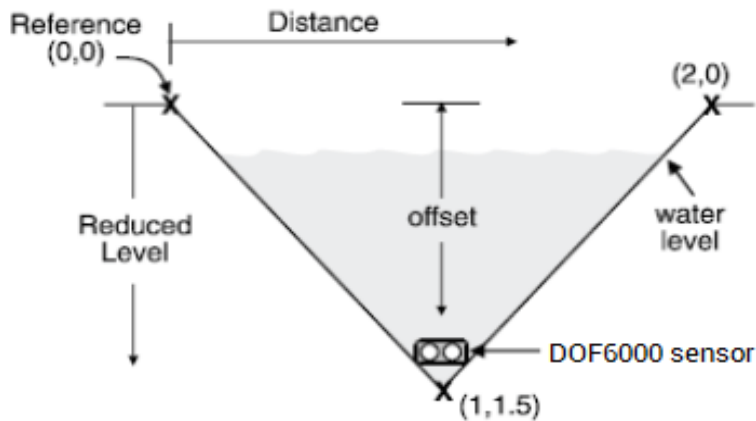
Installation Options

• Partially Filled Pipe

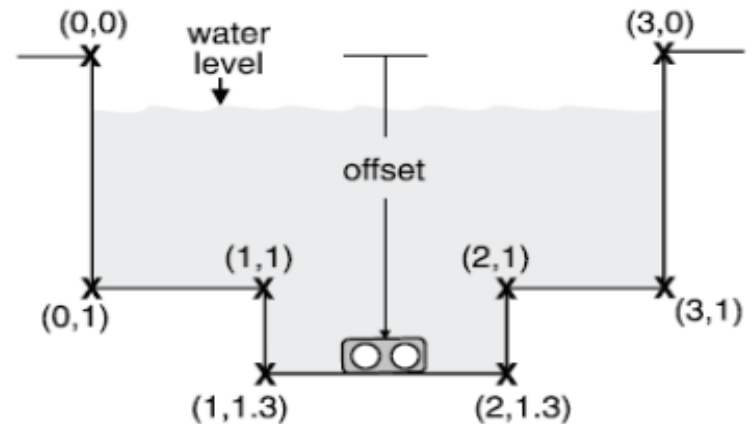


Installation Options

V-Notch Shape Channel



Pre-formed Two-stage Rectangular Channel



ECHO SOUNDER



RIVER SURVEY BOAT / ADCP





RAFIQ & SONS - Lahore Cell: 0331 - 4495218 E:m: rafiq_son@yahoo.com

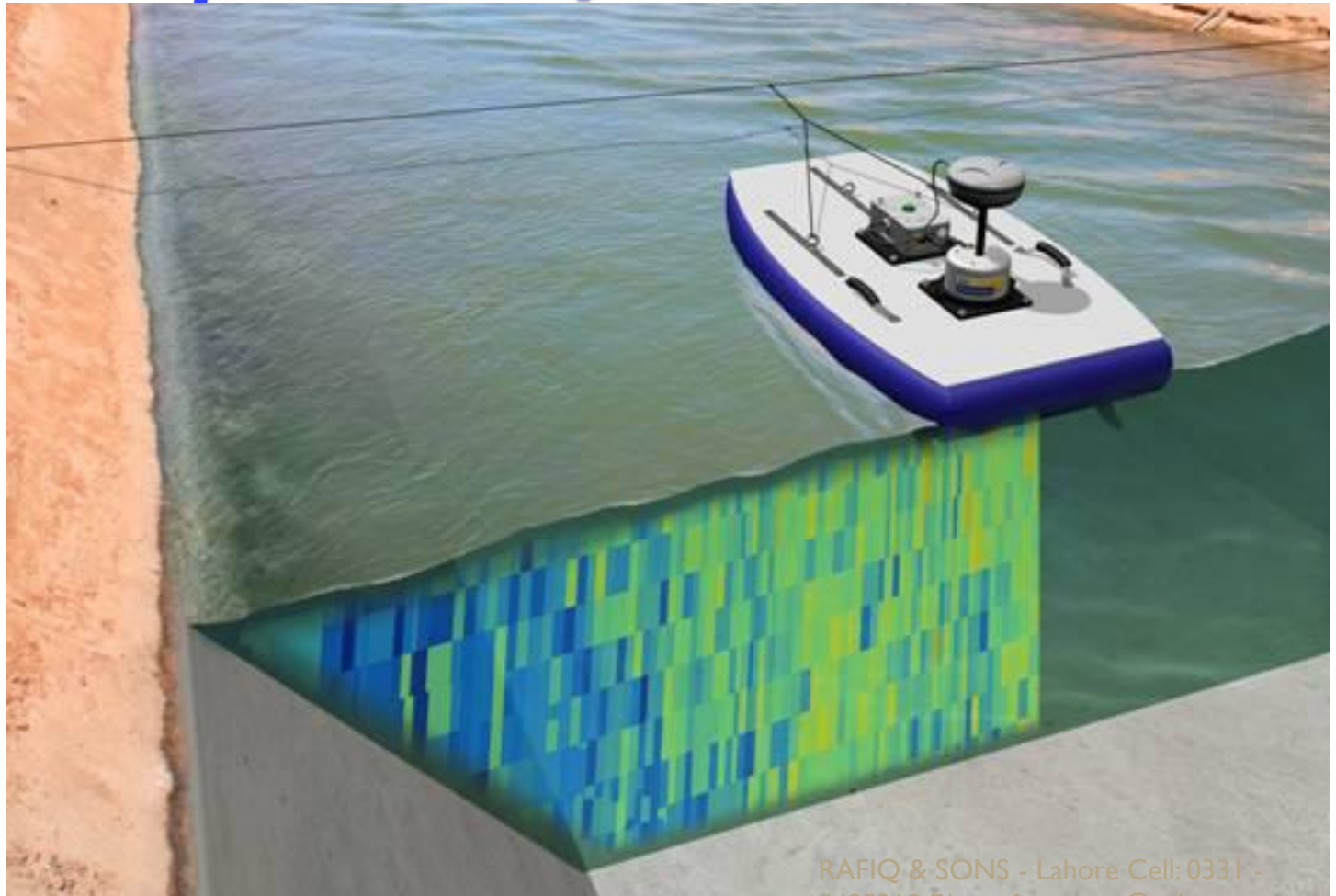
ADCP Sensor with Portable Boat



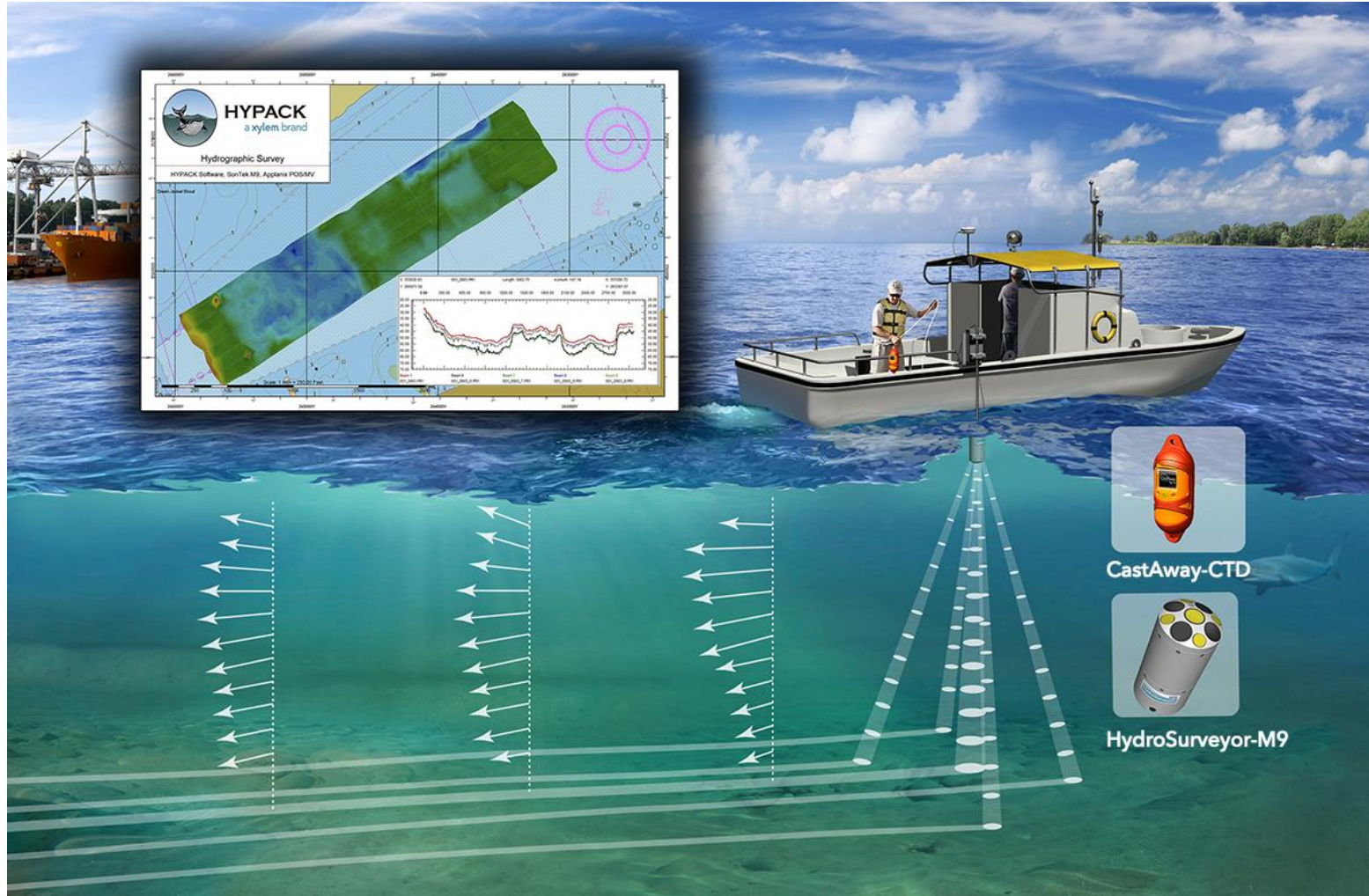
Conventional Boat v/s Portable



Just Transect Channel From One End to other, it will give you Complete Profile



M9 Sensor for Large Application



Digital Depth Sounder Provide instant Depth on Screen

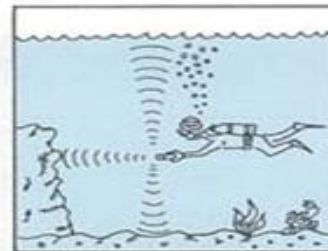


FEATURES

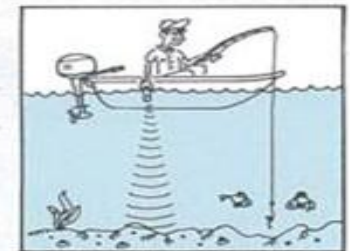
PS-7

• 50m WATERPROOF

Unique portable sounder contains a dry cell and a transducer. It is used for marine diving, fishing on the small boat or measurement of depth for river works because of 50m waterproof and anti-impactness.



For Diving



For Fishing

• EASY OPERATION

Distance can be measured by pointing the sensor toward the object and sliding the switch on only. Display can be backlighted for night time operation.

COMMON FEATURES OF PS-7

• OPERATION BY DRY CELL BATTERY

You can operate with dry cell battery 006P. Auto power off function works to shut the power off automatically about 10 seconds after you release the switch.



RAFIQ & SONS - Lahore Call: 0331 - 4495218 E/m: rafiq_son@yahoo.com

SEDIMENTATION SAMPLER



DH – 48 Sampler

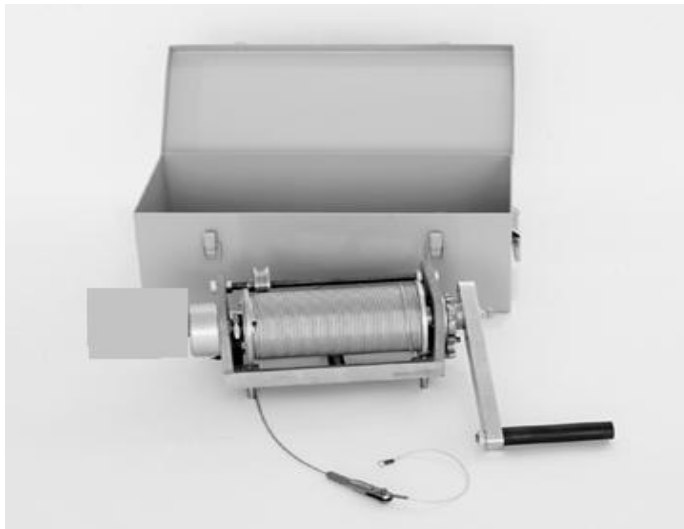
Type: Handheld Depth Integrating

DH – 59 Sampler

Type: Handheld Depth Integrating



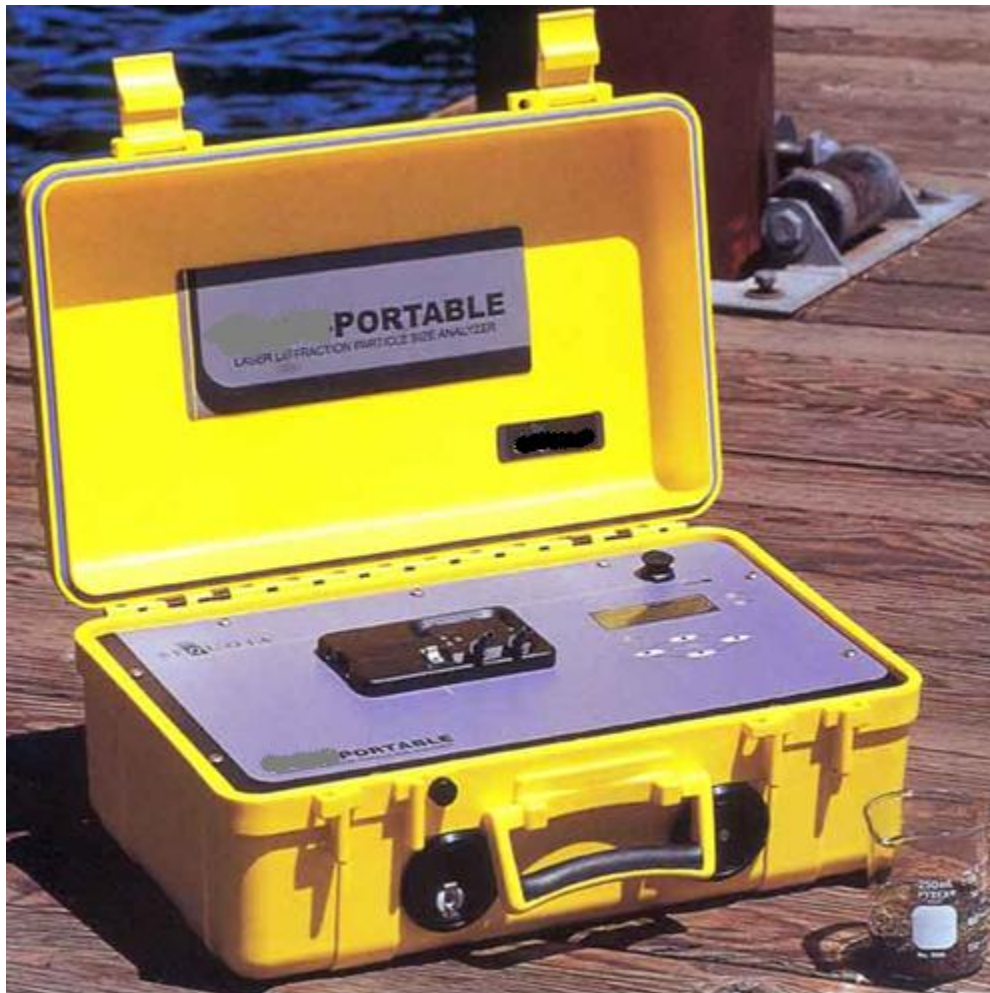
Depth Integrating Sediment Sampler D49



**Type: Suspension
Depth Integration**
**A sampler for
suspension by
gauging winch to
take suspended-
sediment samples
in streams not
greater than 10 m
in depth.**



Particle Size Analyzer of Sediments (Portable Laboratory)



- **Battery powered portable particle size analyzer.**

- **It can be used in the field, in the laboratory or on the**

Camera for Boreholes / wells



Different Size Camera Options

RAFIQ & SONS - Lahore Cell: 0331 - 4495218 E/m: rafiq_son@yahoo.com

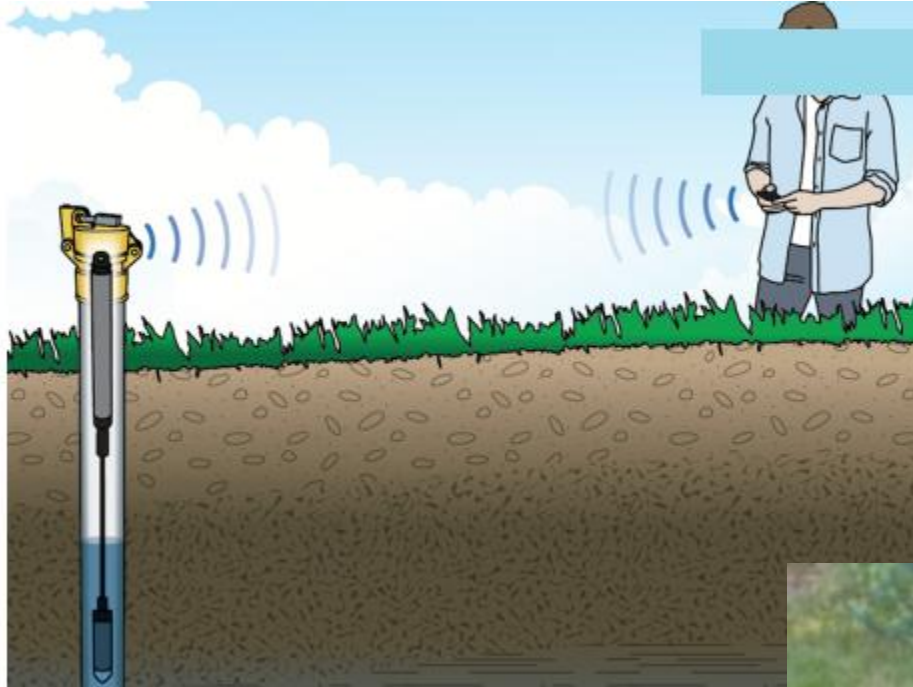
Ground water Logger

Bluetooth Low Energy Water Level Data Logger



Simplify Data Collection with
Bluetooth Water Level Logger

Bluetooth Low Energy Water Level Data Logger



RAFIQ & SONS - Lahore Cell: 0331 -
4495218 E/m: rafiq_son@yahoo.com

Well Logging System



Automatic/Manual/Electrical Winch



Water Flow for WELL

designed to measure water flow for well



DIGITAL WATER LEVEL INDICATOR FOR WELLS



Fast, accurate measurements are possible in the field or anywhere, without the use of down-hole instrumentation. Lightweight, compact, versatile, and easy to operate.

Multi-Parameter Water Quality Meter

Measure and display up to 11 water quality parameters simultaneously



Sensor/Feature	U-51	U-52	U-52G	U-53	U-53G
pH	•	•	•	•	•
ORP	•	•	•	•	•
Dissolved Oxygen	•	•	•	•	•
Conductivity	•	•	•	•	•
Salinity	•	•	•	•	•
TDS (Total Dissolved Solids)	•	•	•	•	•
Seawater Specific Gravity	•	•	•	•	•
Temperature	•	•	•	•	•
Turbidity (LED)		•	•		
Turbidity (Tungsten Lamp)				•	•
Water Depth			•	•	•
GPS					•

Ground Penetrating Radar

Double frequency GPR is applied to the inspections of reinforced concrete structure, tunnels, lining thickness and internal structure, subgrade, disease, road layer, road grade, also geological survey, archaeology, engineering geology and environmental evaluation etc field.

A variety materials of pipeline locating is acceptable for pipeline inspection. GPR inspection depth is 1.5m-5m, maximum inspection depth can be 10m(it related to the medium water content, relative dielectric constant value).



Ground Penetrating Radar



100MHz



200MHz



500MHz



800MHz



1000MHz



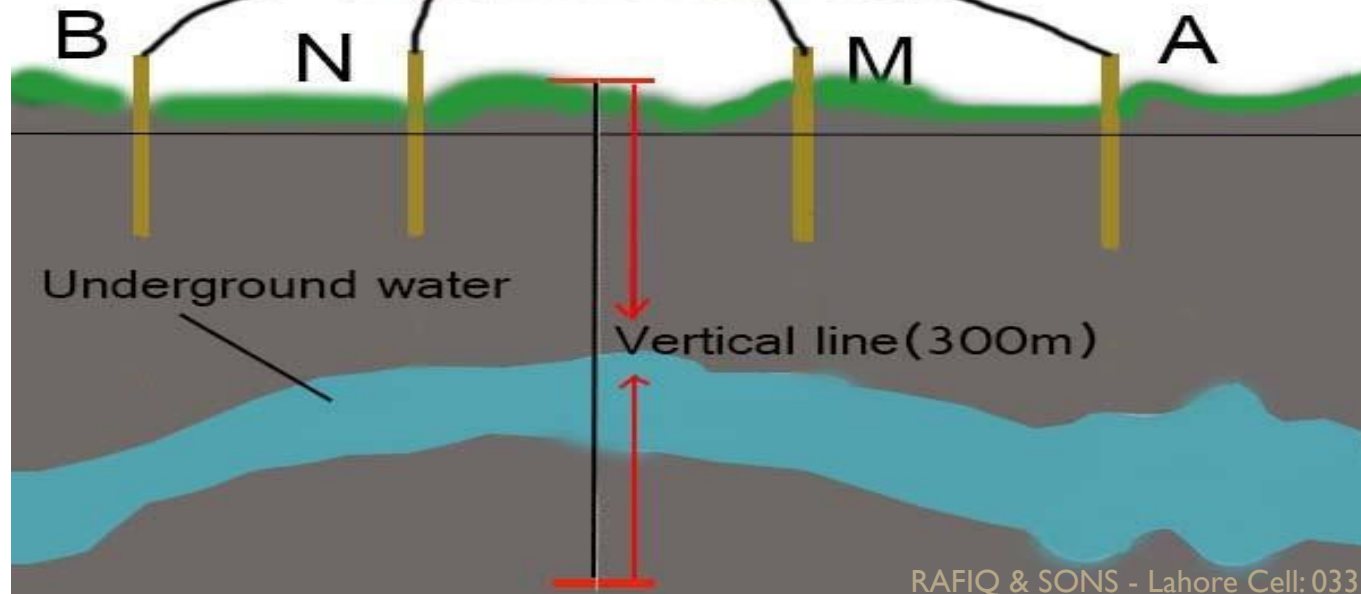
1600MHz

Resistivity Meter

Underground Water Resource And Mineral Exploration



The instrument will help you getting the different resistivity at the vertical line. You could know where the water is through analysis the resistivity



By utilizing relevant parameters of apparent resistivity and induced polarization method, the instrument is widely used in many aspects including metal and non-metal mineral resources exploration, energy exploration, city geophysical exploration, railway and bridge engineering exploration, etc.



THANKS FOR YOUR TIME

PLEASE CONTACT:

RAFIQ & SONS

**1st Floor , 358 - F/2 Johar Town - Lahore -
PAKISTAN**

Tell: +92 42 35304549 ,

Cell / Whats App: +92 331 4495218

E/m: rafiq_son@yahoo.com

Skype: abdulrehman.pu